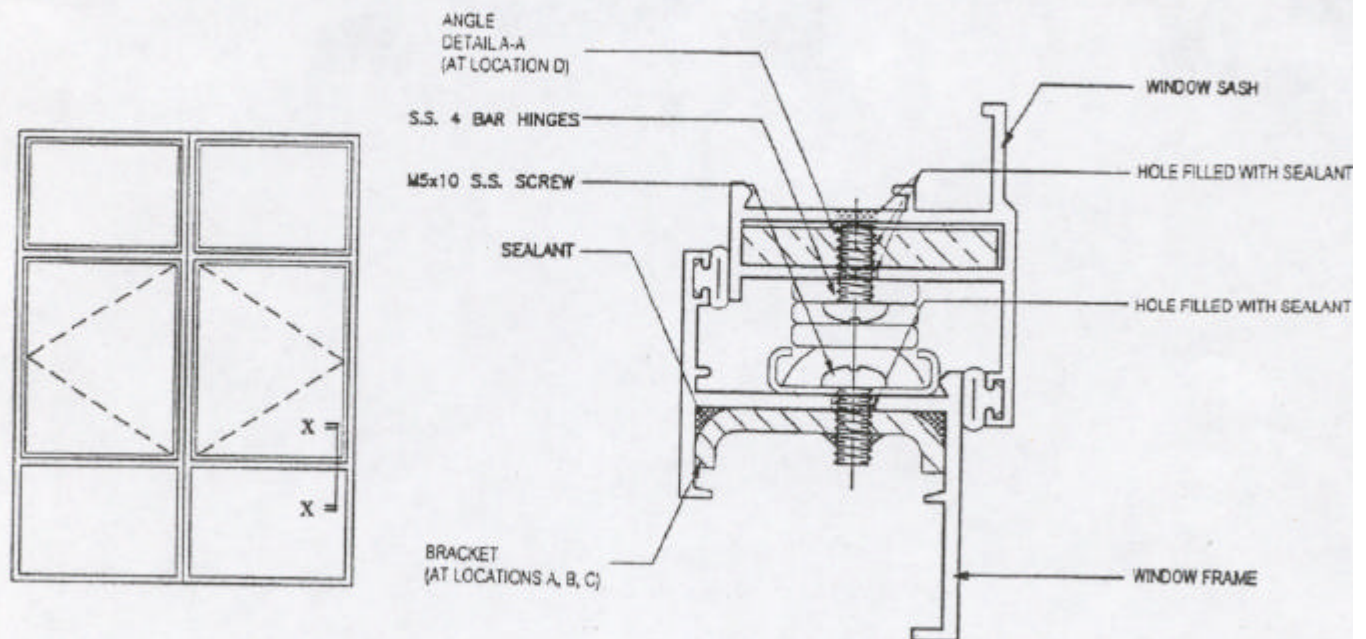
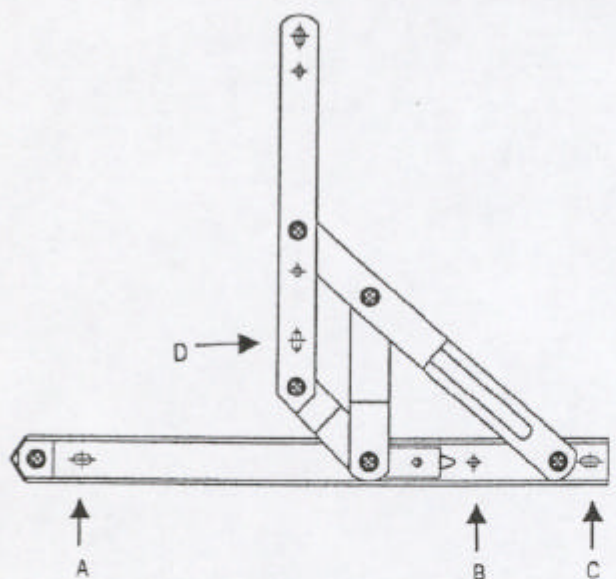


# Appendix A PNAP 248



ELEVATION

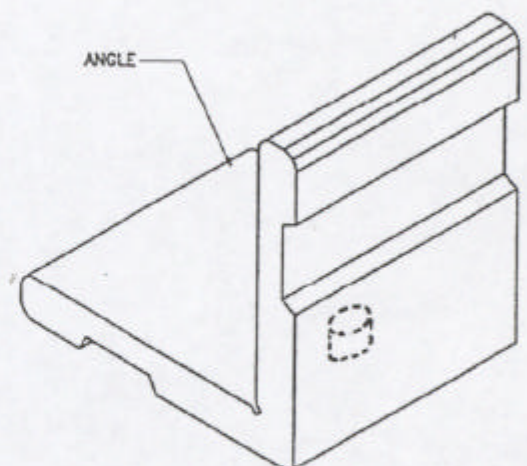
SECTION X-X  
SIDE HUNG WINDOW WITH S.S. BRACKET AND  
ALUMINIUM ANGLE INSERTED FOR FIXING SCREWS



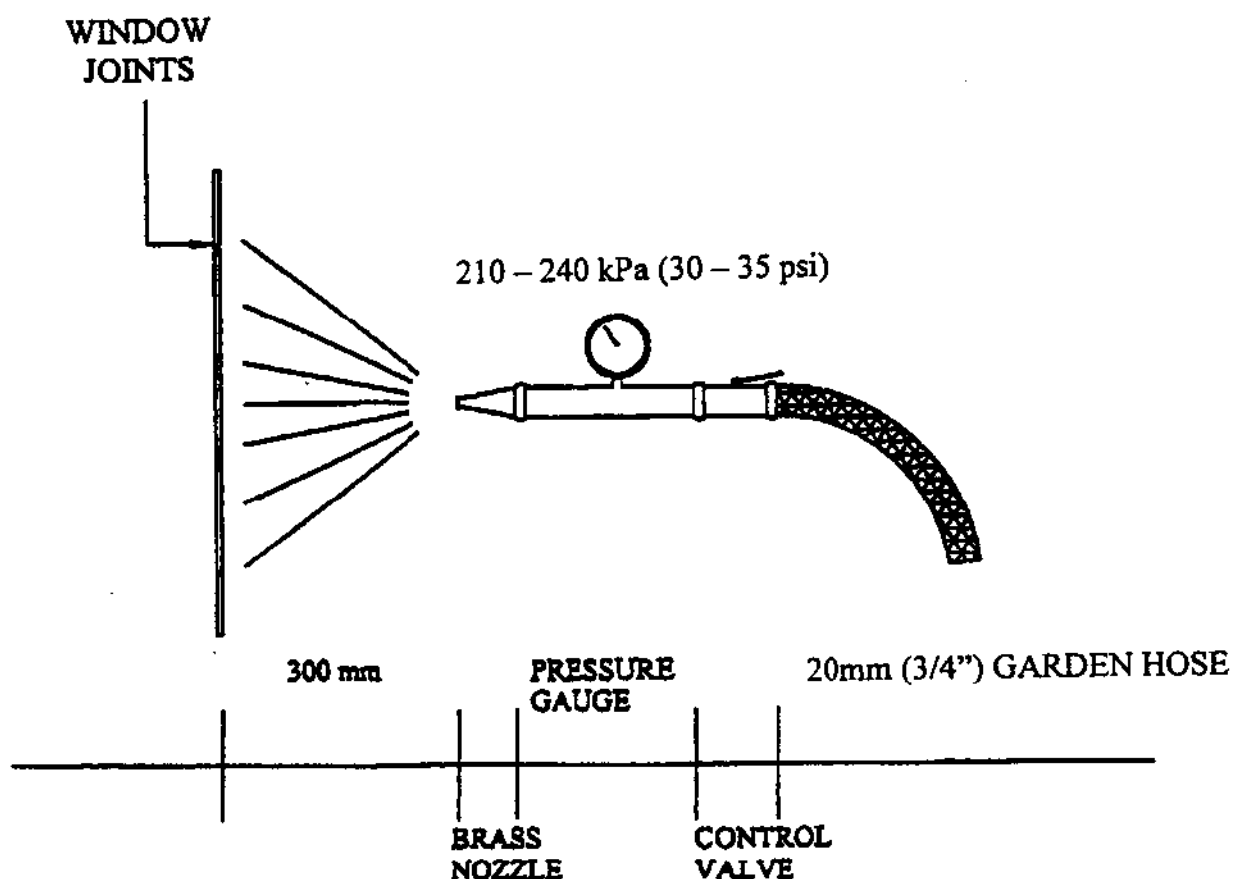
A, B, C – LOCATION FOR SCREW TO WINDOW FRAME  
(LOCAL THICKENING BY BRACKET)

D – LOCATION FOR SCREW TO WINDOW SASH  
(LOCAL THICKENING BY ANGLE)

S.S. 4-BAR HINGE



DETAIL A-A



The nozzle pressure should be adjusted to produce water pressure between 210-240 kPa (30-35 psi) and be continuously applied for 1 minute for every 2m of joint length. The window joints are deemed to have failed where there are signs of water seepage through the joints during the watertightness test.

#### **WATERTIGHTNESS TEST**